



# PINEHURST

3516 Voda Drive  
Milton, WI  
*The Ridges, Lot 34*

**OFFERED AT \$354,900**

**MOVE-IN READY!**

Located in The Ridges subdivision, where you can enjoy an inviting neighborhood in a rural-like setting.

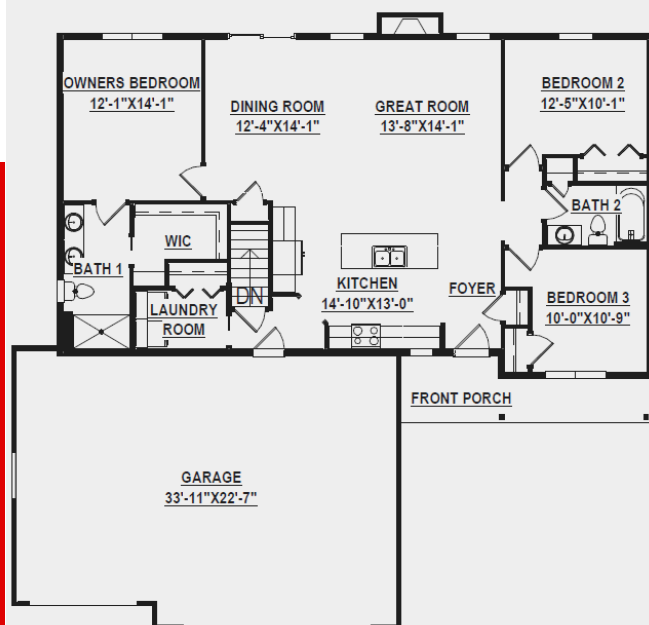
This ranch is ideal for those of you looking for a starter home and/or those looking to down-size. The cathedral ceiling in the great room will provide endless natural lighting!

## SCHEDULE A SITE/HOME TOUR

Kelsey Paasch, Director of Sales & Operations  
P: 608.756.2989 x 103  
E: [info@buildadvantagehomes.com](mailto:info@buildadvantagehomes.com)  
W: [buildadvantagehomes.com](http://buildadvantagehomes.com)

## MAIN FEATURES

- ✓ 1,507 sq. ft.
- ✓ 3 bedrooms
- ✓ 2 baths



“I’m very happy with the quality construction, energy efficiency, and timely performance of your Advantage Homes team and would happily recommend building with you to anyone!”



## HOME HIGHLIGHTS

Focus on Energy certified & 3rd-party inspected  
Structural 10-year warranty  
GAF Dimensional shingles 50-year/lifetime warranty  
Sump pump system  
Passive radon system  
Egress window & window well  
Water softener system w/ a 40-gallon water heater  
Cathedral ceiling in Great Room  
Pella 250 windows  
Direct vent gas fireplace  
Maple painted wall cabinets in kitchen  
Hickory stained kitchen island, laundry, & bathroom  
vanity cabinets  
Soft-close drawers & cabinet doors  
Luxury vinyl in great room/kitchen/dining room  
Quartz kitchen countertop  
Premium color cultured marble bath countertops  
Laundry cabinets  
Dishwasher & microwave  
Rough-in for full LL bath in basement  
16' x 10' stamped rear patio  
Fine grade & seeding of lawn  
Concrete sidewalk & driveway

