



CIMMARON WAY

4302 Scottys Drive
Janesville, WI
Terneus Estates

OFFERED AT \$439,900

Estimated Completion: December 2021

Located in the premier Terneus Estates subdivision, this ranch will give you all of the Modern Farmhouse feels!

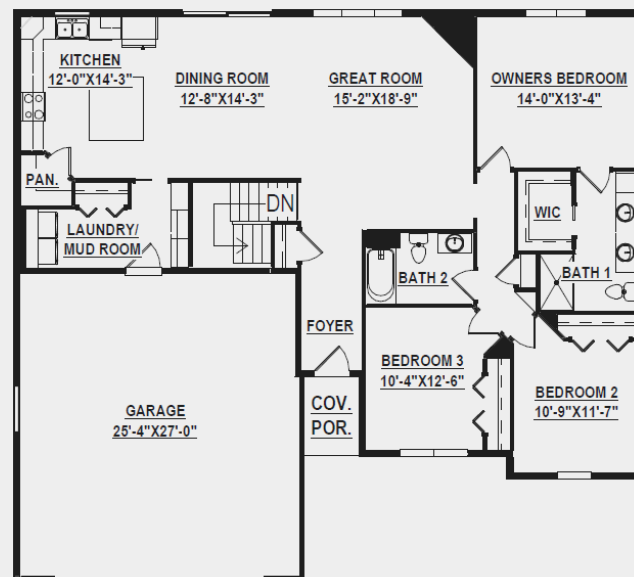
In the home, you will find a flexible, open design concept. Whether you are looking for a starter home or downsizing, get cozy here and make this your next home sweet home.

SCHEDULE A SITE/HOME TOUR

Kelsey Paasch, VP of Sales & Marketing
P: 608.756.2989 x 103
E: info@buildadvantagehomes.com
W: buildadvantagehomes.com

MAIN FEATURES

- ✓ 1,750 sq. ft.
- ✓ 3 bedrooms
- ✓ 2 baths



“I’m very happy with the quality construction, energy efficiency, and timely performance of your Advantage Homes team and would happily recommend building with you to anyone!”



HOME HIGHLIGHTS

Focus on Energy & 3rd-Party Inspection
Structural 10-year warranty
GAF Dimensional shingles 50-year/lifetime warranty
Sump pump system
Passive Radon system
Black Andersen 100 windows
Egress window and window well
Water softener system w/ 50-gallon water heater
9' tall walls on main floor
Tray ceiling in foyer, dining and great room
Walk-in pantry
Laundry room w/ built-in lockers and drop zone
Cabinets in laundry for extra storage
Direct vent gas fireplace
Soft close drawers and doors in all cabinets
Quartz countertop in kitchen
Dishwasher and Microwave / exhaust
9' tall basement walls
Lower level plumbing for future bathroom
224 sq. ft. rear patio
Fine seed and grading w/ landscaping package
Concrete driveway and sidewalk

