



LAYTON

941 Cambridge Dr.
Janesville, WI
Hamilton Heights

OFFERED AT \$469,900

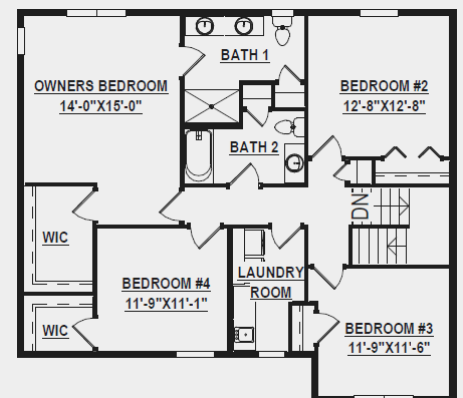
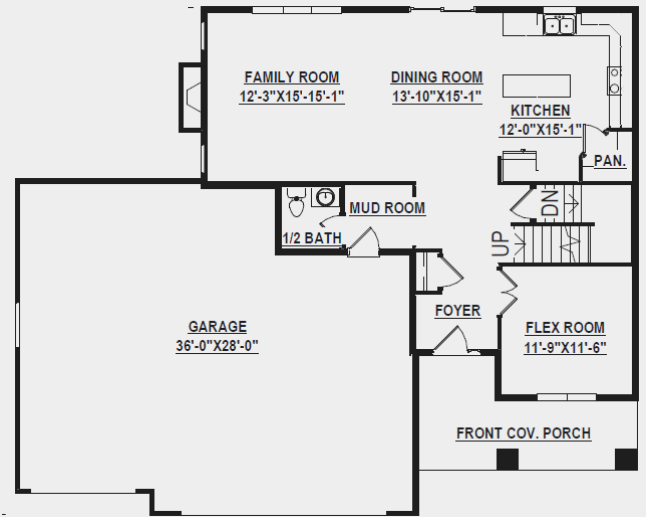
Estimated Completion: December 2021

Located in the highly sought-after Hamilton Heights subdivision, this two-story home will blow your mind!

Featuring over 1,000 sq. ft. on the main level, you will find your living space and flex room, plus four bedrooms on the second level, spanning 1,272 sq. ft. This home boasts SPACE + customized beauty! Make this your next home sweet home.

MAIN FEATURES

- ✓ 2,348 sq. ft.
- ✓ 4 bedrooms
- ✓ 2.5 baths



SCHEDULE A SITE/HOME TOUR

Kelsey Paasch, Director of Sales & Operations
P: 608.756.2989 x 103
E: info@buildadvantagehomes.com
W: buildadvantagehomes.com



HOME HIGHLIGHTS

Focus on Energy certified & 3rd-party inspected
Structural 10-year warranty
GAF Dimensional shingles 50-year/lifetime warranty
Sump pump system
Passive radon system
2 zone heating system
Upgraded insulated overage head garage door w/ glass windows
9' basement walls
Upgrade Pella 250 windows & patio door
Plaster walls
9' ceilings on main floor w/ tray in master bedroom
Separate Laundry room w/ cabinets & sink on 2nd floor
Upgraded 50-gallon water heater w/ water softener complete system
Upgraded lighting
Upgraded painted maple cabinets w/ soft close &
roll-out trays
Quartz countertop w/ Blanco sink
Tiled master shower
Upgraded flooring to LVP & LVT w/ luxury carpet in bedrooms
Upgraded Kohler plumbing fixtures throughout home
DeckOrators Vista composite deck & stairs
Lockers in mudroom
Gas Fireplace in great room
Dishwasher & microwave/exhaust included
Fine grade & seeding of lawn
Concrete sidewalk & driveway

