



# CUSTOM TWO-STORY

3441 Emerald Dr.  
Janesville, WI  
Lot 2, *Terneus Estates*

## OFFERED AT \$549,900

Estimated Completion: March 2022

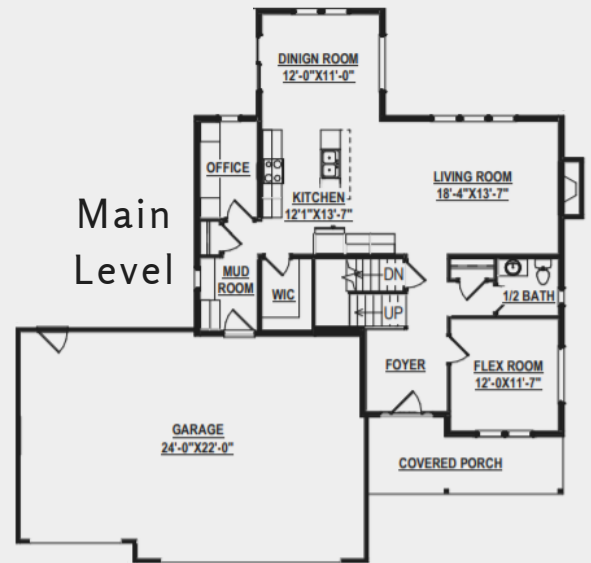
Located in the premier Terneus Estates subdivision, this two-story home gives you everything you want, plus more!

We guarantee you'll fall in love with this oasis. Featuring four bedrooms + flex room + finished LL, you will have all the space you need! Let's not forget to mention the pocket office, right off the kitchen. How amazing is that?! Did we mention the second-level laundry room?! The features are endless. Call this HOME today.

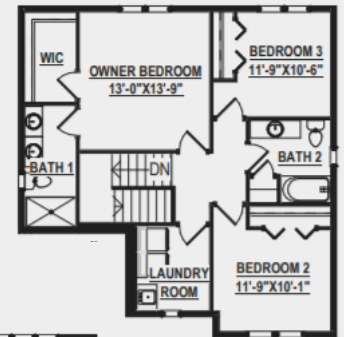
### MAIN FEATURES

- ✓ 2,863 sq. ft.
- ✓ 4 bedrooms + flex
- ✓ 3.5 baths

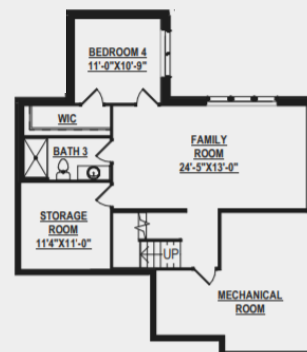
Main Level



Second Level



Lower Level



## SCHEDULE A SITE/HOME TOUR

Kelsey Paasch, VP of Sales & Marketing  
P: 608.756.2989 x 103  
E: info@buildadvantagehomes.com  
W: buildadvantagehomes.com



## HOME HIGHLIGHTS

Greenbelt at rear of lot  
Focus on Energy & 3rd-Party inspection  
Structural 10-year warranty  
GAF Dimensional shingles 50- year/lifetime warranty  
Vinyl siding in premium color  
Double hung Weathershield Vision 3500 windows  
18' wide overhead garage door w/ opener  
Increase front covered porch  
Sump pump system  
Passive Radon system  
Water softener system w/ 50-gallon water heater  
Pocket office w/ cabinets & countertops  
Mudroom w/ bench & drop zone  
Wash sink & cabinets in laundry  
Soft-close drawers & doors in all cabinets  
Quartz countertop in kitchen w/ Blanco sink  
Upgraded LVT & LVP flooring w/ carpet in bedrooms  
Upgraded lighting & fixtures  
Upgraded plumbing fixtures & comfort-height toilets  
Gas fireplace in family room  
Dishwasher & chimney hood / exhaust  
9' tall main floor & basement walls  
750 sq. ft. lower level completed w/ full bath & bedroom  
196 sq. ft. rear patio  
Fine seed & grading  
Concrete driveway & sidewalk

