



# LAYTON

941 Cambridge Dr.  
Janesville, WI  
*Hamilton Heights*

## OFFERED AT \$469,900

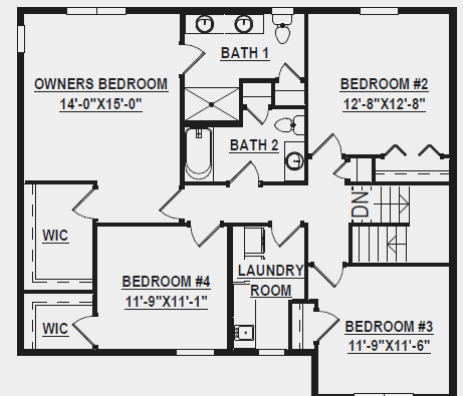
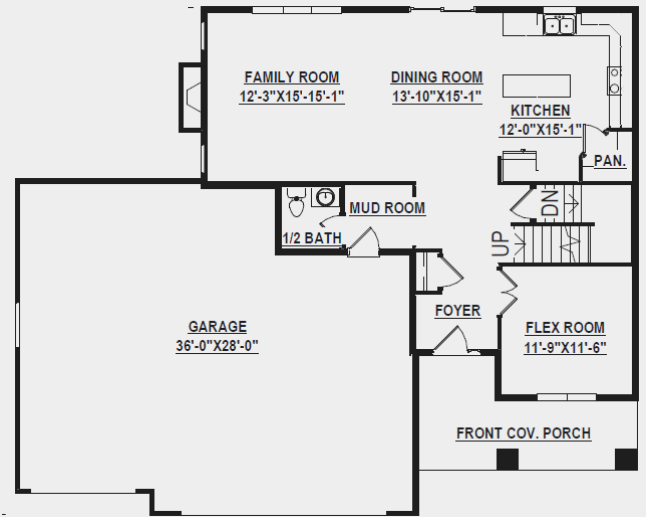
Estimated Completion: December 2021

Located in the highly sought-after Hamilton Heights subdivision, this two-story home will blow your mind!

Featuring over 1,000 sq. ft. on the main level, you will find your living space and flex room, plus four bedrooms on the second level, spanning 1,272 sq. ft. This home boasts SPACE + customized beauty! Make this your next home sweet home.

### MAIN FEATURES

- ✓ 2,348 sq. ft.
- ✓ 4 bedrooms
- ✓ 2.5 baths



### SCHEDULE A SITE/HOME TOUR

Kelsey Paasch, Director of Sales & Operations  
P: 608.756.2989 x 103  
E: [info@buildadvantagehomes.com](mailto:info@buildadvantagehomes.com)  
W: [buildadvantagehomes.com](http://buildadvantagehomes.com)



## HOME HIGHLIGHTS

Focus on Energy certified & 3rd-party inspected  
Structural 10-year warranty  
GAF Dimensional shingles 50-year/lifetime warranty  
Sump pump system  
Passive radon system  
2 zone heating system  
Upgraded insulated overage head garage door w/ glass windows  
9' basement walls  
Upgrade Pella 250 windows & patio door  
9' ceilings on main floor w/ tray in master bedroom  
Separate Laundry room w/ cabinets & sink on 2nd floor  
Upgraded 50-gallon water heater w/ water softener complete system  
Upgraded lighting  
Upgraded painted maple cabinets w/ soft close &  
roll-out trays  
Quartz countertop w/ Blanco sink  
Tiled master shower  
Upgraded flooring to LVP & LVT w/ luxury carpet in bedrooms  
Upgraded Kohler plumbing fixtures throughout home  
Composite decking & stairs  
Lockers in mudroom  
Gas Fireplace in great room  
Dishwasher & microwave/exhaust included  
Fine grade & seeding of lawn  
Concrete sidewalk & driveway

