



CUSTOM TWO-STORY

3441 Emerald Dr.
Janesville, WI
Lot 2, *Terneus Estates*

THIS HOME IS SOLD.

Estimated Completion: April 2022

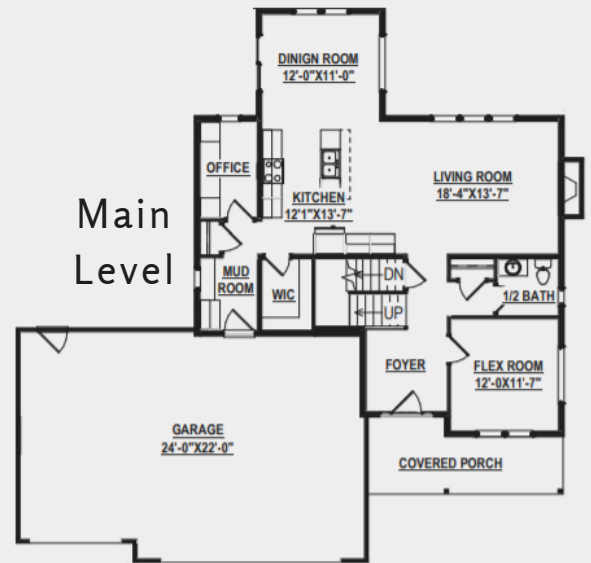
Located in the premier Terneus Estates subdivision, this two-story home gives you everything you want, plus more!

We guarantee you'll fall in love with this oasis. Featuring four bedrooms + flex room + finished LL, you will have all the space you need! Let's not forget to mention the pocket office, right off the kitchen. How amazing is that?! Did we mention the second-level laundry room?! The features are endless. Call this HOME today.

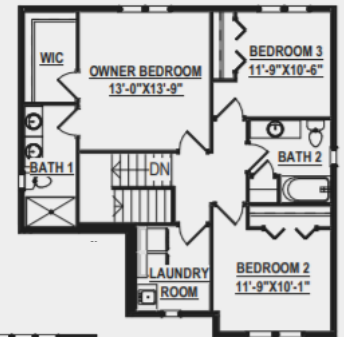
MAIN FEATURES

- ✓ 2,863 sq. ft.
- ✓ 4 bedrooms + flex
- ✓ 3.5 baths

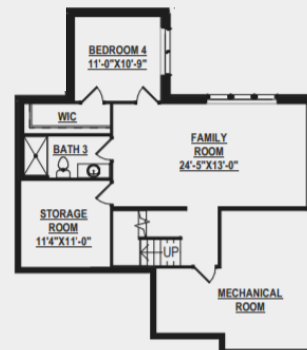
Main Level



Second Level



Lower Level



SCHEDULE A SITE/HOME TOUR

Kelsey Paasch, VP of Sales & Marketing
P: 608.756.2989 x 103
E: info@buildadvantagehomes.com
W: buildadvantagehomes.com



HOME HIGHLIGHTS

Greenbelt at rear of lot
Focus on Energy & 3rd-Party inspection
Structural 10-year warranty
GAF Dimensional shingles 50- year/lifetime warranty
Vinyl siding in premium color
Double hung Weathershield Vision 3500 windows
18' wide overhead garage door w/ opener
Finished garage w/hook ups for future garage heater
Increase front covered porch
Sump pump system
Passive Radon system
3-zone HVAC system
Water softener system w/ 50-gallon water heater
Pocket office w/ cabinets & countertops
Mudroom w/ bench & drop zone
Wash sink & cabinets in laundry
Soft-close drawers & doors in all cabinets
Quartz countertop in kitchen w/ Blanco sink
Upgraded LVT & LVP flooring w/ carpet in bedrooms
Upgraded lighting & fixtures
Upgraded plumbing fixtures & comfort-height toilets
Gas fireplace in family room
Dishwasher & chimney hood / exhaust
9' tall main floor & basement walls
750 sq. ft. lower level completed w/ full bath & bedroom
196 sq. ft. rear patio
Finished garage
Gas line in garage for future heating
Fine seed & grading
Concrete driveway & sidewalk

