



MODIFIED BRADENTON

3422 McCann Drive
Janesville, WI
Terneus Estates - Lot 43

OFFERED AT \$429,900

Estimated Completion: February 2024



Located in the premier
Terneus Estates subdivision,
this custom ranch features
upgrades galore!

With an open-concept living area on the main level
and a spacious three-car garage, this home offers
ample space for its owners.

**SCHEDULE A TOUR
OF THIS HOME!**

Ryan White
VP of Sales & Marketing
608.756.2989 x 141
ryan@buildadvantagehomes.com



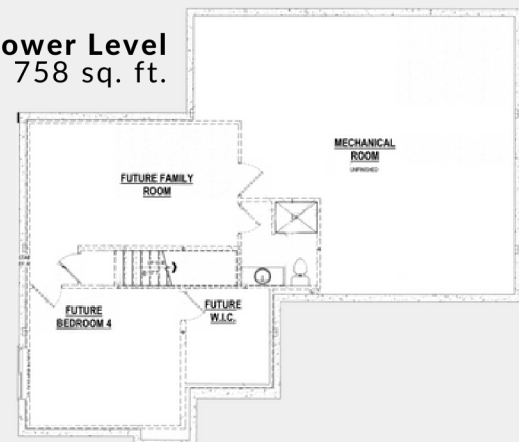
Tina Gould
Director of Condominium & MLS Sales
608.756.2989 x 106
tina@buildadvantagehomes.com

MAIN FEATURES

1,510 sq. ft. | 3 bedrooms | 2 baths



Future Lower Level
758 sq. ft.

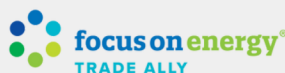


J-2314 | 01.08.24



HOME HIGHLIGHTS

Focus on Energy & third-party inspection
Structural 10-year warranty
GAF Dimensional shingles 50-year/lifetime warranty
Water softener complete system
Passive radon system
9' high basement walls
9' high main-level walls
Egress window well
LVP flooring in main areas, carpet in bedrooms
Tray ceiling in great room & owner bedroom
Upgraded plumbing faucets & light fixtures
Cultured marble bathroom countertops
First-floor laundry with cabinets
Soft-close drawers & cabinets throughout
Painted maple & stained cabinets
Quartz kitchen countertops
Dishwasher & microwave included
Gas fireplace with mantel in great room
Covered concrete front & rear porch
Three-car garage
Fine seed & grading
Concrete driveway & sidewalk



Features are subject to change, buyer to verify