

MODIFIED SOMMERSET

3614 Voda Dr
Milton, WI
The Ridges - Lot 25

OFFERED AT \$445,900

Estimated Completion: July 2024



FIND YOUR NEW HOME AT



Located in The Ridges subdivision, where you can enjoy an inviting neighborhood in a rural-like setting.

This Modified Somerset is an attractive home plan, complemented with an airy and open design that is great for entertaining.

SCHEDULE A TOUR OF THIS HOME!

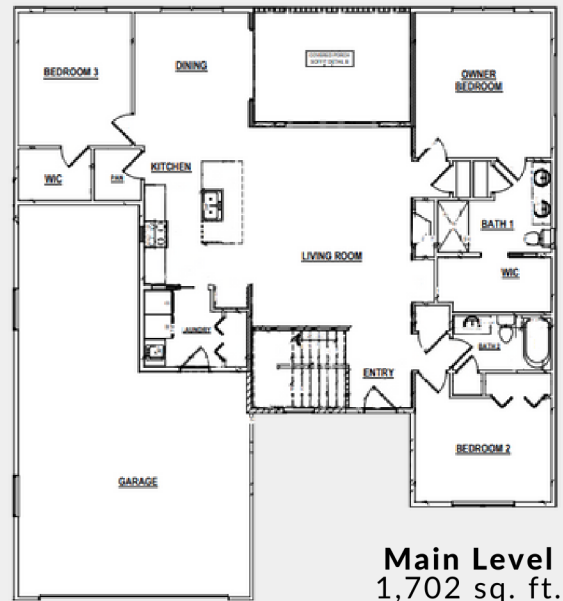
Ryan White
VP of Sales & Marketing
608.756.2989 x 141
ryan@buildadvantagehomes.com



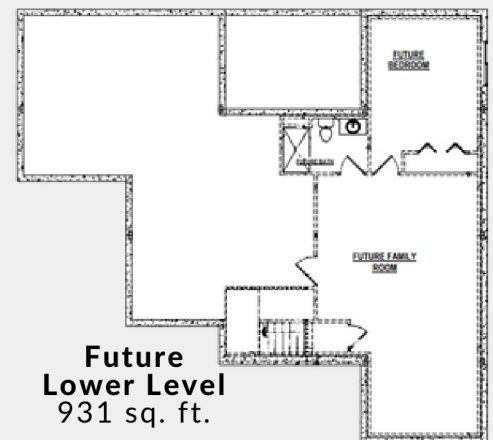
Tina Gould
Director of Condominium & MLS Sales
608.756.2989 x 106
tina@buildadvantagehomes.com

MAIN FEATURES

1,702 sq. ft. | 3 bedrooms | 2 baths



Main Level
1,702 sq. ft.



Future Lower Level
931 sq. ft.

J-2323 | 04.02.24



HOME HIGHLIGHTS

Focus on Energy certified & 3rd-party inspected
Structural 10-year warranty
GAF Dimensional shingles w/ 50-year/lifetime warranty
Sump pump system
Passive radon system
Water softener system w/ 40-gallon water heater
Egress window w/ well
Pella 250 windows
Interior painting package
Direct vent gas fireplace
9' ceiling height in main level & in basement
Cathedral ceiling in entry and living room
Upgraded LVP flooring in main area
Maple painted cabinets in kitchen
Maple stained cabinets in the bathrooms
Soft-close drawers & cabinet doors
Quartz kitchen countertop
Tiled kitchen backsplash
Dishwasher & microwave included
Owner's suite w/ large, walk-in closet
Tiled shower in master bathroom
15' x 11' rear exterior covered patio w/vaulted ceiling
2-car garage with extra 16' deep second bay
Sleek, contemporary exterior elevation
Fine grade, seeding of lawn
Landscaping package included
Concrete sidewalk & driveway



Features are subject to change, buyer to verify