



MODIFIED ABERDEEN

1270 Black River Ct
Whitewater, WI
Park Crest - Lot 24

OFFERED AT \$439,500

Estimated Completion: May 2025



Located in the premier Park Crest subdivision, this custom ranch features upgrades galore!

With an open-concept living area on the main level and a three-car garage this home offers ample space for its owners.

**SCHEDULE A TOUR
OF THIS HOME!**

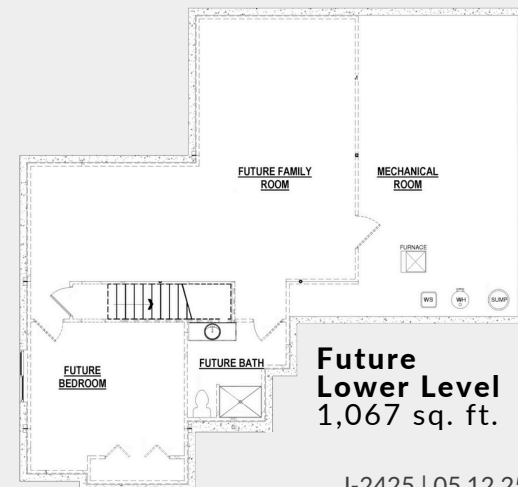
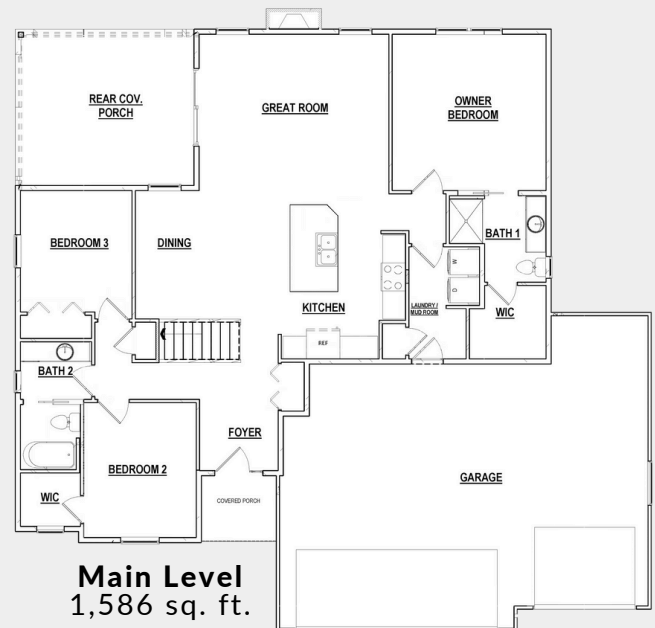
Ryan White
VP of Sales & Marketing
608-921-4448
ryan@buildadvantagehomes.com



Tina Gould
Director of Condominium & MLS Sales
608-590-6202
tina@buildadvantagehomes.com

MAIN FEATURES

1,586 sq. ft. | 3 bedrooms | 2 baths



J-2425 | 05.12.25



HOME HIGHLIGHTS

Focus on Energy & third-party inspection
Structural 10-year warranty
GAF Dimensional shingles 50-year/lifetime warranty
Water softener system w/ 40 gallon water heater
Passive radon system
9' high main-level & basement walls
Tray ceiling great room
Egress window well
Pella 250 series windows
Direct to vent gas fireplace
Walk-in closet in owner's bedroom
Upgraded LVP flooring in main areas
Carpet in bedrooms
Tiled kitchen backsplash
Quartz kitchen countertops
Dishwasher & microwave included
Soft-close drawers & cabinets throughout
Stained maple cabinets
Cultured marble bathroom countertops
First-floor laundry with cabinets
16' x 14' covered rear porch
Three-car garage
Fine grade, seeding of lawn & landscape package
Concrete driveway & sidewalk



Features are subject to change, buyer to verify