



# MODIFIED CIMMERON WAY

4416 Scottys Dr  
Janesville, WI  
Terneus Estates - Lot 31

**Offered at \$449,500**

Estimated completion: May 2025

Price subject to change after final selections are made



Located in the premier  
Terneus Estates subdivision,  
this custom ranch features  
upgrades galore!

With an open-concept living area on the main level  
and a spacious three-car garage, this home offers  
ample space for its owners.

**SCHEDULE A TOUR  
OF THIS HOME!**

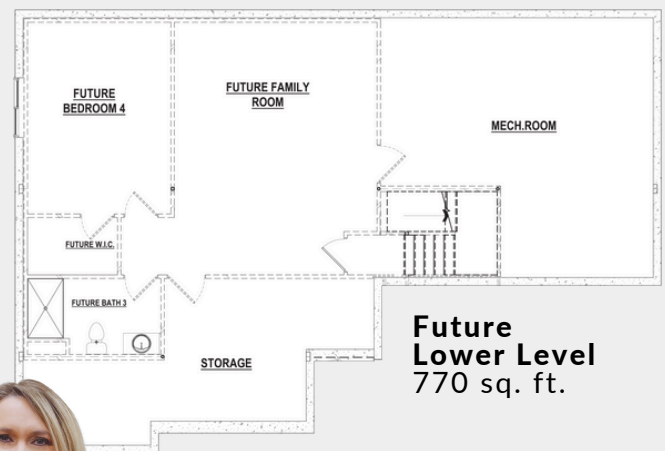
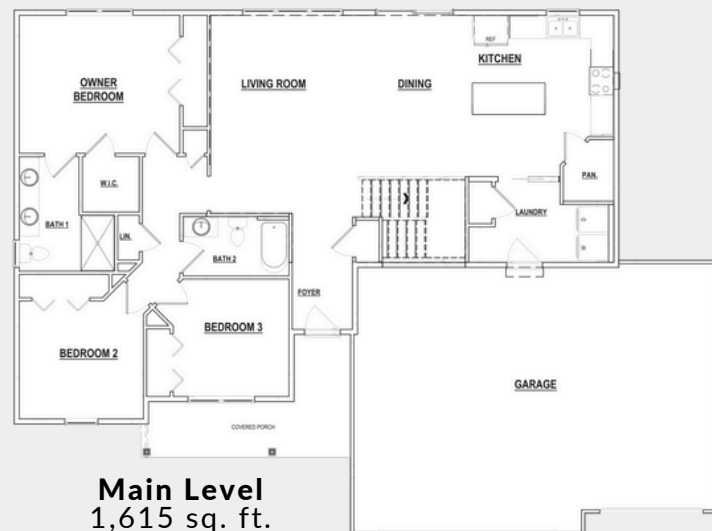
Ryan White  
VP of Sales & Marketing  
608-921-4448  
ryan@buildadvantagehomes.com



Tina Gould  
Director of Condominium & MLS Sales  
608-590-6202  
tina@buildadvantagehomes.com

## MAIN FEATURES

1,615 sq. ft. | 3 bedrooms | 2 baths





## HOME HIGHLIGHTS

Focus on Energy & third-party inspection  
Structural 10-year warranty  
GAF Dimensional shingles 50-year/lifetime warranty  
Water softener system w/ 40 gallon water heater  
Passive radon system  
9' high basement walls  
Cathedral ceiling in living room & dining room  
Egress window well  
Pella 250 Series windows  
Walk-in closet in owner's bedroom  
Upgraded LVP flooring in main areas  
Carpet in bedrooms  
Tiled kitchen backsplash  
Quartz kitchen countertops  
Dishwasher & microwave included  
Walk-in pantry  
Soft-close drawers & cabinets throughout  
Maple stained cabinets throughout  
Cultured marble bathroom countertops  
First-floor laundry with cabinets  
12' x 14' rear patio  
Three-car garage  
Fine grade, seeding of lawn & landscape package  
Concrete driveway & sidewalk



*Features are subject to change, buyer to verify*