



MODIFIED WHISTLER RIDGE

5417 Samuel Dr
Milton, WI
The Ridges - Lot 135

OFFERED AT \$479,500

Estimated completion: September 2026
Price subject to change after final selections are made



FIND YOUR NEW HOME AT



Located in The Ridges subdivision, where you can enjoy an inviting neighborhood in a rural-like setting.

This Modified Whistler Ridge is an attractive home plan, complemented with an airy and open design that is great for entertaining.

SCHEDULE A TOUR OF THIS HOME!

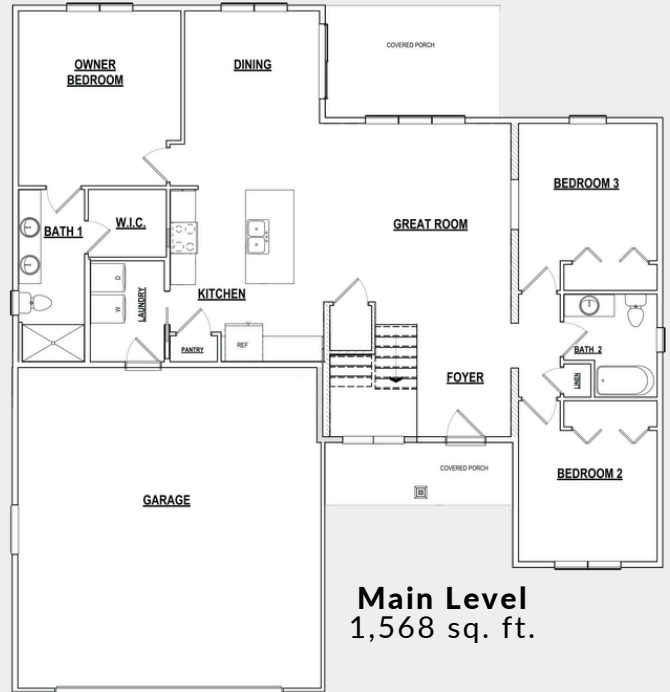
Ryan White
VP of Sales & Marketing
608-921-4448
ryan@buildadvantagehomes.com



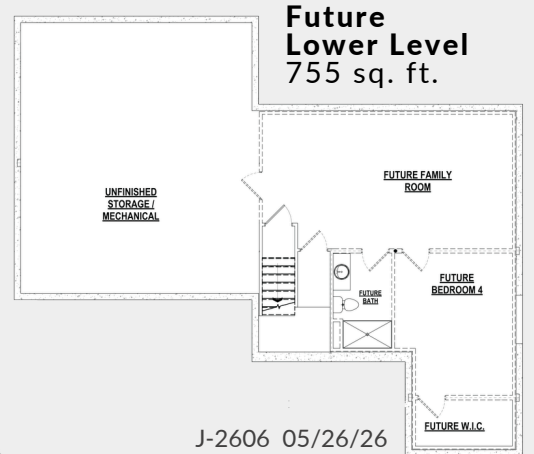
Tina Gould
Director of Condominium & MLS Sales
608-590-6202
tina@buildadvantagehomes.com

MAIN FEATURES

1,568 sq. ft. | 3 bedrooms | 2 baths



Main Level
1,568 sq. ft.



Future Lower Level
755 sq. ft.

J-2606 05/26/26



HOME HIGHLIGHTS

Focus on Energy certified & 3rd-party inspected
Structural 10-year warranty
GAF Dimensional shingles w/ 50-year/lifetime warranty
Sump pump system & Passive radon system
Water softener system w/ 40-gallon water heater
Egress window w/ well
Alliance windows
Interior painting package
Electric fireplace
9' ceiling height in the main level & in the basement
Cathedral ceiling in the great room and the foyer
Upgraded LVP flooring
Maple cabinets & vanities
Soft-close drawers & cabinet doors throughout
Quartz kitchen countertops
Tiled kitchen backsplash
Laundry on the main floor
Owner's suite w/ walk-in closet
Cultured marble bathroom countertops
2-car garage
14' x 9' covered rear porch
Sleek, contemporary exterior elevation
Fine grade, seeding of lawn
Landscaping package included
Concrete sidewalk & driveway



Features are subject to change, buyer to verify